



# EVANS ROOFING COMPANY, INC.

January 2017

## SAFETY NEWS

Dan Nowak, EH&S

After our Annual Training Week program, each division started 2016 off with a bang. Our union and non-union divisions worked extremely hard all year long.

I am very pleased to announce that, once again, our associates have managed to uphold our policies and pride in being the only OSHA VPP Mobile Workforce Star full building envelope company in the United States!

When dealing with extreme job site safety and environmental conditions that change on a moments notice, I commend everyone within the companies on their abilities to adapt so efficiently. Keeping safety in mind and adjusting that safety accordingly allows all associates to go home to their family, friends and loved ones. This is an extremely hard challenge to accomplish yet I observe this daily.

Congratulations to all of our dedicated talent.



## INSIDE THIS ISSUE:

Safety News	1
Marketing Corner	2
Human Resources Report	2
Project Profile <b>SUNY Cortland Old Main</b>	3
Project Profile <b>Kellogg - Augusta</b>	4
Thanks & Contact	5



# HUMAN RESSOURCES REPORT

Nancy Haupt

Since I started working here 3 ½ years ago, the most frequent concern I've heard from associates is the desire for additional benefit offerings. I'm thrilled to say that we were able to make additional benefit offerings a reality beginning in 2017! Open enrollment was conducted on-line through The Lawley Marketplace. As a result of moving the enrollment process on-line, associates now have the option to purchase Dental, Vision, Supplemental Life Insurance coverage, Identity Theft Protection and Legal Shield programs. These programs are in addition to the Medical Insurance that we've offered all along. Based on actual enrollment data, associates have responded very favorably to the additional benefit offerings! 59 associates enrolled in Dental Insurance, 40 in Vision and 37 Voluntary Life insurance plans were elected. The Identity Theft and Legal plans also had enrollments.


Thanks to everyone for taking the time to navigate the new enrollment process and for taking advantage of the new benefits offered! Your voices were heard!

# MARKETING CORNER

Dustin Lanterman

This year has seen the expansion of our web-based presence, by regularly updating our website with project profiles and company news. Year 2016 has also seen the continuous creation and curation of social media platforms (i.e. Facebook, LinkedIn and Twitter). This allows us to easily update our "followers" with important company information. In 2016 alone, our Facebook page has grown to over 200 followers and our new LinkedIn pages also has more than 50 followers. If you haven't already, please be sure to check out our social media pages. The Marketing Department is continuing the process of updating our tradition marketing brochures for ERC, Charles F. Evans Company, Inc. and CFE, Inc. as *leave behinds* for potential customers. The Marketing Department is actively submitting articles and project profiles for industry publications. The SUNY Cortland Old Main project completed by Charles F. Evans Company, Inc. (featured on the next page) was chosen as the 'Close Up' feature in *Professional Roofing* and the Goldwin-Smith Hall project at Cornell was featured in the historical preservation section of *Roofing Contractor*. May 2016 viewed Evans Roofing Company, Inc. as the feature cover story of *Roofing Contractor*. The story focuses on our safety culture and how we've made it part of our every day core values.

**HISTORIC-PRESERVATION PROJECT**



**GOLDWIN SMITH HALL, CORNELL UNIVERSITY**  
ITHACA, N.Y.

**TEAM**  
GENERAL CONTRACTOR: Charles F. Evans Co., Inc., Ithaca, N.Y. [www.evansroofing.com](http://www.evansroofing.com)  
GENERAL CONTRACTOR: C/O Clear Construction LLC, Rochester, N.Y. [www.clearconstruction.com](http://www.clearconstruction.com)

**ROOF MATERIALS**  
Charles F. Evans Co. Field Superintendent Brian Bullock and his crew of qualified roof crew members installed 3,000 square feet of new colored Flat-roofed, 20-year, 60 mil, EPDM rubber roofing system. There was an additional 12,000 square feet of existing white rubber roofing with new flashing, gutters and downspouts. After the long and hard winter, the Charles F. Evans Co. roofing crew and its Construction Manager Don Savelski continued work on the 150,000 square foot of 21- to 24-inch, 1 1/2-inch-thick stone tiles in lieu of metal gutters and downspouts.

**COVER SUPPLIER:** Evans Copper Co. [www.evanscopper.com](http://www.evanscopper.com)  
**SALES REPRESENTATIVE:** Vincent DiStasio, Sales Co. Inc., [www.evansroofing.com](http://www.evansroofing.com)

**ROOF REPORT**  
Charles Smith Hall began its existence as the Terry Stearns building in 1883. It was designed by Charles Osborne and is currently listed on the National Historic Register. In 1907, the building was expanded by Charles F. Evans & Co. In 1913, an addition, designed by Carrere & Hastings in a classical architectural style, was built on the opposite end of the building.

PHOTOGRAPHY: ERIC DE WIL

34 Roofing | NOVEMBER | DECEMBER 2016

**CLOSE-UP**



**ROOFING** In 1923, the New University of New York (SUNY) at Cortland's Old Main building was the largest building in the state. Beginning in July 2015, the building's roof system was replaced by Evans Roofing Co., Inc. The new roof system was installed by Evans Roofing Co., Inc. The new roof system was installed by Evans Roofing Co., Inc. The new roof system was installed by Evans Roofing Co., Inc.

PHOTOGRAPHY: ERIC DE WIL

**MADE IN THE USA** INSIDE: MADE IN THE USA

**ROOFING CONTRACTOR**



**SAFETY FIRST**

It's Not Just a Motto, It's a Way of Life at Evans Roofing Co. PG 84

# PROJECT PROFILE

## SUNY Cortland Old Main

The restoration scope of work on the steep-slope areas included removing the existing slate roof, copper aprons and making repairs to the existing wood substrate. This was followed by the installation of 4,540 sq ft. of new 16oz. copper aprons and 22,320 sq ft. of new unfading green, 10"x18" slate tiles quarried by the Evergreen Slate Company in Middle Granville, NY. The existing EPDM roofing on the low slope areas was removed and a new 2-ply Soprema colply roof system was installed along with a permanent fall protection system.



The historical restoration was completed in March 2016, with 8 roofers from the Local 203 Roofing Union and 5 sheet metal workers from the Local 112 Sheet Metal Union, all with an average experience in the field of 10 years. All associates were led by three project managers, Don Sewalt, Ken Dennison and Bill Burge who have over 70 years of combined experience in the field. There were some challenges that Charles F. Evans Company, Inc. faced during the duration of this project; providing 100 percent fall protection for steep roof operations, keeping students and faculty protected while the building was occupied and maintaining safe access to and from the work areas. The constant changing New York weather, including extreme heat during the summer months and frigid cold during the winter, was also a factor in the restoration progress.

The completion of the Old Main roof restoration project will provide faculty and students with another testimonial to SUNY Cortland's commitment to historical preservation. In the end, Charles F. Evans Company, Inc. continued and strengthened their core values of quality, safety and uncompromising customer satisfaction on another SUNY Cortland project. Charles F. Evans Company, Inc. is proud to have been a partner on this challenging and rewarding historical roofing restoration project.



# PROJECT PROFILE

## Kellogg Augusta

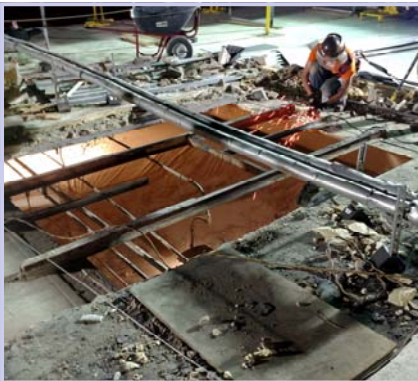


CFE, Inc., a national leader in the roofing industry, was retained to complete a complicated re-roofing project at the Kellogg Bakery in Augusta, Georgia. This project had some challenges to start; a narrow window of time for removing the existing roof and installation of the new roof, three, eight hour shifts around the clock, interior protect to eliminate any construction debris, weather and the use of subcontractors. Simply put communication and scheduling was critical to the success of this project.

With three shifts working around the clock, CFE, Inc. was able to complete the scope of work in 10 days while keeping the facility watertight, free of debris and moisture throughout the project. The project scope was removing 4,785 sq.ft. of lightweight concrete supported by bulb tees with a second layer of roofing consisting of insulation and single ply membrane. A sub-contractor was used to repair/replace bulb tees and install additional structural reinforcements around existing units. A crane subcontractor was utilized to raise existing units, ducts and pipes to meet the new roof height. The installation of the new roof was steel decking, mechanically attaching 1.7" of ISO insulation and adhering 072mil Sika Sarnafil G410 white membrane designed by the Conley Design Group, roof consultant on record for this project.

Safety is always a top priority for CFE, Inc. and with this Kellogg project it wasn't any different. Team Leaders needed to ensure that all CFE, Inc. associates and subcontractors followed all OSHA regulations, in addition to CFE, Inc. and Kellogg's site specific, rigorous safety policies. "Every associate was tied off during the process of removing and replacing decking. Maintaining this level of safety is always a challenge but we were able to do it without incident" said Dan Nowak, Corporate Risk Specialist for Evans Roofing Company, Inc.

In conclusion, this project was a success thanks to the collective efforts of Kellogg, CFE, Inc., the subcontractors and Sika Sarnafil. "The project, in spite of many difficult challenges, went well. We were able to complete the project within the scheduled plant shutdown, and with zero incidences. Far exceeding the customer's requirements and expectations." said Dan Root, Vice President of Operations for CFE, Inc.



## THANK YOU...

### Evans Roofing Company Team Visits Sika Sarnafil

A special **“thanks”** goes out to Executive Vice-President Brian Whelan and his teams at the Sika Sarnafil Plant in Canton, MA for a great tour experience. The Evans Roofing Company, Inc. team greatly appreciated their time spent with us during this interesting and informative tour.

### Evans Roofing Company Visits Evergreen Slate Company

A special **“thanks”** goes out to Evergreen Slate Company located in Granville, NY for a great tour of the slate museum, plant and quarries. The Evergreen Slate Company provided the slate for some very impressive jobs by the Charles F. Evans Company, Inc., a subsidiary of Evans Roofing Company, Inc.

**EVANS ROOFING COMPANY, INC.**

1421 College Avenue  
Elmira, New York 14902

(607) 734-8838

[www.evansroofingcompany.com](http://www.evansroofingcompany.com)

**“LIKE” & “FOLLOW” US ON THESE SOCIAL MEDIA PLATFORMS**

